

Derek Avenue

---

Hove





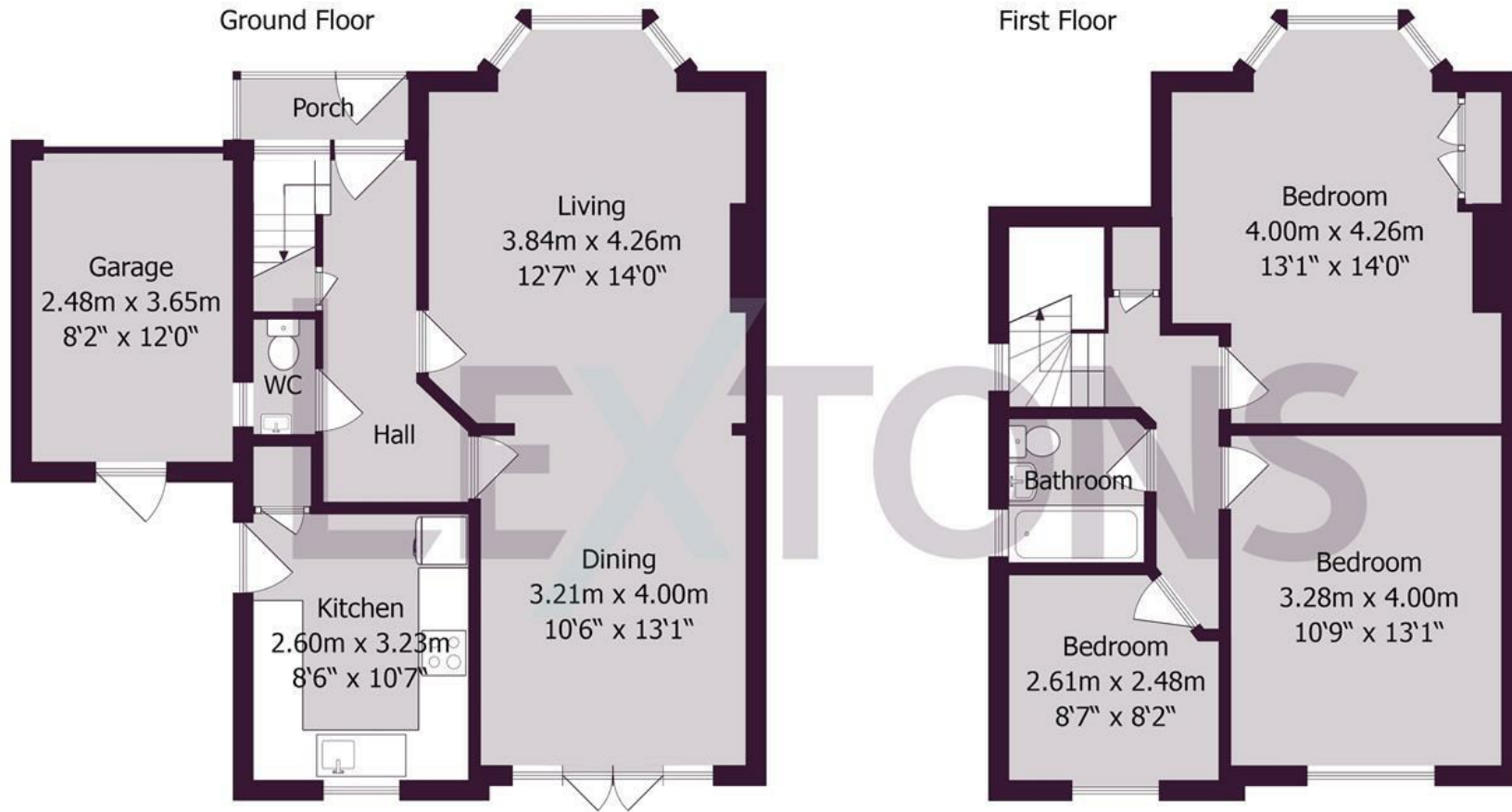
We know just the place...



Lextons are delighted to offer to market a wonderfully presented, three-bedroom, family home with a sunny West facing garden, off-road parking and garage; situated in the ever-popular Lagoon district of Hove.

Derek Avenue runs North to South between New Church Road and Kingsway and in between Middleton Avenue and Brittany Road. Very handy shops can be found close by including a Marks & Spencer's mini food store and Tesco on Boundary Road. For commuters Portslade mainline station is less than a mile away.





Approximate gross internal floor area 108.4 sq m/ 1167 sq ft

Whilst every care has been taken to ensure accuracy, dimensions are approximate and for illustrative purposes only.

Created by Property Photography UK for Lextons. All rights reserved.



Meet us here...  
174 Church Road  
Hove  
BN3 2DJ

We aim to make our particulars both accurate and reliable. However they are not guaranteed; nor do they form part of an offer or contract. If you require clarification on any points then please contact us, especially if you're traveling some distance to view. Please note that appliances and heating systems have not been tested and therefore no warranties can be given as to their good working order.

